



# RELIANCE®

## ORTHODONTIC PRODUCTS

RELIANCEORTHODONTICS.COM

Orthoq  
price list  
2026  
*\*without VAT*  
updated version

### Family Owned. Privately Held. Domestically Made.

ESTABLISHED 1981



MADE IN THE U.S.A.

**INFO & ORDERING**  
info@orthoq.ee  
+372 5693 5646

# Hydrophilic Adhesion Booster

## ASSURE® PLUS ALL SURFACE BONDING RESIN



139€



165€

### ASSURE® PLUS

6 ml Assure® Plus All Surface Bonding Resin #PLUS 139€

2 ml Assure® Plus All Surface Bonding Resin #PLUS2ML 95€

50 Pack Assure® Plus 0.20 ml Unidose (10 ml) #UAP50 165€

### THE MOST VERSATILE RESIN EVER DEVELOPED

- Enhances bond strength on all surfaces
- Tolerates moisture contamination
- Primes and conditions any tooth surface for bonding
- Effective on any enamel type
- Effective on any artificial substrate
- Eliminates hydrofluoric acid with porcelain crowns

### CLINICAL APPLICATIONS

- Normal or atypical enamel
- Dentin or cementum
- Eliminates additional conditioners with
  - Stainless
  - Amalgam
  - Gold
  - Composite
  - Acrylic
  - Pontics
- Eliminates hydrofluoric acid application with
  - Porcelain
  - Lithium Disilicate
  - Zirconia

# The Evolution of Orthodontic Bonding Resins

ADHESION BOOSTERS

ENAMEL PROTECTIVE SEALANTS



# Decal Prevention



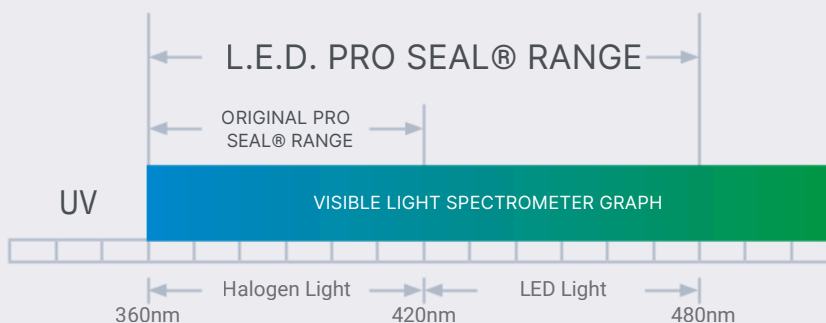
## PRODUCT FEATURES

- Clinically proven for over 15 years
- Complete and extended enamel protection
- Full 2 year enamel protection proven and documented in numerous studies

## PRODUCT FEATURES

- Cures with any curing light
- Full 2 year enamel protection proven and documented in numerous studies
- Also fluoresces under UV light.

## PRO SEAL® LIGHT CURING WAVELENGTHS



## PRO SEAL®

6 ml L.E.D. PRO SEAL®	#LEDPRO	115€
6 ml PRO SEAL® UV	#PRO	125€
Disclosing Light	#UVML	30€



PLAQUE VISIBLE AT DEBOND



PLAQUE REMOVAL WITH POLISHING AT DEBOND

Pro Seal prevented plaque and tartar developing into decal by protecting the enamel integrity.

“Dear by ProSeal to protect my patients’ teeth from white spot lesions. The peace of mind it provides is truly invaluable!”

– Michael K. DeLuke, DDS, MDS

## INSTRUCTIONAL VIDEO

Using Pro Seal to Prevent Decalcification Available at RelianceU.tech



1990



2005



2010



LIGHT BOND™ FILLED SEALANT



PRO SEAL®

## STRENGTH



ASSURE® PLUS  
Unparalleled Bond Strength

TODAY

## PROTECTION



L.E.D. PRO SEAL®  
Unparalleled Decal Prevention

# Light Cure Bracket Adhesives



NEW! Go to® color change.



GO TO®

LIGHT CURE BRACKET ADHESIVE

50€



PUSH SYRINGE

60€



PUSH SYRINGE TIPS

## NEWLY DEVELOPED - SUPERIOR WORKING PROPERTIES

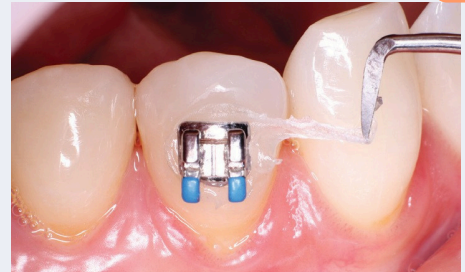
- Proven bond strength and consistency
- Unique viscosity easily penetrates bracket pads
- No bracket drift – stays in place until cured
- New proprietary microfiller construction
- One-piece flash removal – "ropes" off bracket periphery
- Translucent finish matches any tooth shade
- Maximum bond strength
- Easy removal and cleanup
- UV disclosing agent – fluoresces on the tooth under black light

## CLINICAL APPLICATIONS

- Bracket and tube bonding
- Fixed lingual retainer bonding
- Bonds all metal, ceramic and composite attachments
- Reliamold compatible (see Reliamolds on page 29)
- Clear aligner attachment material
  - Viscous to allow for pre-loading of trays

GO TO®

4g Paste Syringe	#GTP	50€
4g Paste In Tips (10 Tips)	#GTT	60€
4g Color Change paste Syringe	#GTPCC	50€



EXCESS ADHESIVE ROPES OFF IN A SINGLE PIECE FROM THE PERIPHERY OF THE BRACKET



BLACKLIGHT FLUORESCENT



CRYSTAL CLEAR FOR UNIVERSAL SHADE MATCHING WITH CLEAR ALIGNERS

RECOMMENDED PRIMER WITH GO TO® ADHESIVE

Assure® Plus (Page 3)



139€

- \* Etchants and Conditioners appear on page 17
- \* Bonding Accessories appear on page 35
- \* Auxiliary Bonding Supplies appear on page 35



GO TO® ADHESIVE WORKING PROPERTIES ARE IDEAL FOR CLEAR ALIGNER ATTACHMENTS



1. PUMICE



2A. ETCH



2B. ETCH APPLICATION



3. POST ETCH CHALKY SURFACE



4A. ASSURE® PLUS



4B. ASSURE® PLUS APPLICATION



4C. ASSURE® PLUS AIR DRY



4D. ASSURE® PLUS CURE (OPTIONAL BUT RECOMMENDED)



5. ADHESIVE APPLICATION



6. TRAY SEATING



7. CURE



8. GOTO® MIMICS ALL TOOTH SHADES

# Light Cure Bracket Adhesives



## Multi-Purpose Composite

T.K.O. is a versatile composite with strength and a low modulus of elasticity. T.K.O. composite paste is effective in both laboratory and chairside applications.

ONLY FROM  **RELIANCE**®

### Proprietary Working Properties for Specific Applications

#### CURES STRONG AND SMOOTH WITH MODEST PLIABILITY

- Resists opposing enamel wear
- Soft cure resin matrix for patient comfort

#### VISCOSITY PERFECTED FOR VARIED APPLICATIONS

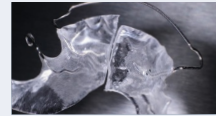
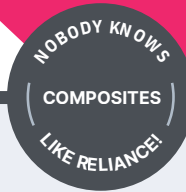
- Controlled needle tip dispensing
- Flexes and recovers with acrylic appliances

#### AVAILABLE IN TWO SHADES

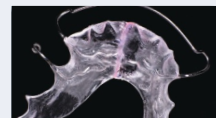
- **PINK SHADE**
  - Aids in placement, remove and clean up
  - Matches acrylic appliances
  - Fluoresces under blacklight
- **CLEAR**
  - Aesthetic
  - Fluoresces under blacklight



40€



**ACRYLIC APPLIANCE REPAIRS**



**OCCUSAL BUILD-UPS**



**BITE OPENING RAMPS**



**LABORATORY BLOCK OUT APPLICATIONS**



#### T.K.O.® (ORDER INFORMATION)

3.4g Syringe Pink Shade with 5 Tips #TKOP 40€

3.4g Syringe Clear with 5 Tips #TKOC 40€



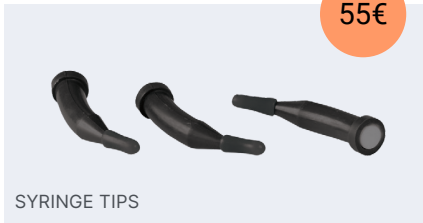
**INSTRUCTIONAL VIDEO**

Bonding Posterior Occlusal Buildups Available at RelianceU.tech

**® LIGHT BOND™**  
LIGHT CURE BRACKET ADHESIVE



45€



55€

**TIME TESTED PERFORMANCE**

- Unrivalled bond strength
- Highly filled paste
- Smooth tacky viscosity
- Consistent successful bonds
- Easy flash and debonding cleanup
- Designed for Doctor or staff bracket placement without drift

**CLINICAL APPLICATIONS**

- Routine bracket and tube bonding
- Intraoral bonding of metal, ceramic or composite attachments
- Indirect bonding to stone/resin models

**® PAD LOCK®**  
LIGHT CURE FLUORESCING ADHESIVE



45€

**BONDS CHEMICALLY AND MECHANICALLY**

- Bonds chemically to metal bases
- Paste fluoresces under black light for flash and debonding cleanup

**CLINICAL APPLICATIONS**

- Metal bracket and tube bonds
- Indicated for fine grade mesh bases

45€ 55€

LIGHT BOND™	SYRINGE	TIPS
Regular Viscosity Syringe*	#LBPPF	#LBPTF
Medium Viscosity Syringe	#LBMPPF	#LBMPTF
Thin Viscosity Syringe	#LBTPPF	#LBTPTF
Blue Tinted Syringe	#LBBPPF	#LBBPTF

\* Most Popular Choice

RECOMMENDED PRIMER WITH LIGHT BOND™ ADHESIVE

Assure® Plus (Page 3)



139€

- \* Light Bond™ sealant appears on page 20
- Etchants and Conditioners appear on page 19
- \* Bonding Accessories appear on page 35
- \* All syringe applicators contain 5g of paste with Fluoride
- \* Auxiliary Bonding Supplies appear on page 29

PAD LOCK®

4.5g Pad Lock® Paste in Push Syringe with Fluoride #PLPF

45€

# Chemical Cure Adhesives

## **PHASE II®** MIX PASTE BRACKET ADHESIVE – CHEMICAL CURE



### TIME TESTED CONSISTENCY

#### - Microfilled paste

- unrivaled strength
- Smooth, tacky viscosity
- No bracket drift
- Self curing
  - Full polymerization
  - A&B mix system
  - 2.5 minute working time
- Easy removal and cleanup
- Contains Fluoride

### CLINICAL APPLICATIONS

- Routine clinical bonding
- Bracket and tube bonding

### AVAILABLE IN DUAL CURE

- Initial light cure option
  - 10 second exposure tacks bracket in position
  - Allows quick and accurate positioning
- Chemical cure - time activated
  - 4 minute working time
  - Total polymerization under bases
- Contains Fluoride

#### PHASE II® & PHASE II® DUAL CURE

#### PASTE COMPONENTS

Paste A 6g Syringe	#1PSAF	35€
Paste B 6g Syringe	#1PSB	35€
Paste A 18g Jar	#PJAF	55€
Paste B 18g Jar Dual Cure P	#PJB	55€

#### RECOMMENDED PRIMER WITH PHASE II® ADHESIVE

Assure® Plus (Page 3)



\* Etchants & conditioners appear on page 19 \*  
 Bonding accessories appear on page 35 \*  
 Auxiliary Bonding Supplies appear on page 29



# EXCEL®

CHEMICAL CURE SPECIALTY ADHESIVE

35€



PASTE A

35€



PASTE B

## EXCEL®

Excel® Regular Paste A in 6g Screw Syringe with Fluoride #1ERSAF 35€

Excel® Regular Paste B in 6g Screw Syringe #1ERSB 35€

Excel® Regular Paste A in 12g Jar with Fluoride #ERJAF 55€

Excel® Regular Paste B in 12g Jar with Fluoride #ERJB 55€

### TIME TESTED PERFORMANCE

- Unsurpassed bond strength
- Thin, creamy consistency
- 3 minute working time
- Contains Fluoride

### CLINICAL APPLICATIONS

- Indirect bonding adhesive
- Bonded acrylic appliances



# RELY-A-BOND®

NO MIX BRACKET ADHESIVE

215€



RELY-A-BOND® KIT #RPF

35€



3.5g PUSH SYRINGE

## RELY-A-BOND® COMPONENTS

3.5g Paste In Syringe #1RPP 35€

16g Primer #RPF 85€

### 1 STEP / CONTACT ADHESIVE

- 25 second working time
- Chemical cure - no light required
- Saves time and material
  - No Mixing
  - Minimizes adhesive per bond
- Highly filled paste
  - Increased bond strength
  - Tacky viscosity
  - Prevents bracket drift

# Specialty Procedures

## RELIAWAX® LIGHT CURE WAX-LIKE PROTECTION



40€

RELIAWAX®

### WAX-LIKE PROTECTION IN A SYRINGE

- Light cure gel in a syringe
  - Controlled application – perfect viscosity
  - Cures clear, smooth, and flexible
- Outperforms traditional patient wax
- Fluoresces under blacklight
  - Facilitates complete coverage and cleanup
- Semi permanent application
  - Remains in place from one appointment to the next
  - Withstands routine brushing and eating
- Single piece removal
  - Entire protective layer removes in one piece
- Effective block out material

### RELIAWAX®

1.5 GM Reliawax® Syringe w/ 10 Tips

#RWX

40€



CONTROLLED APPLICATION



SEMI-PERMANENT CLEAR PROTECTION

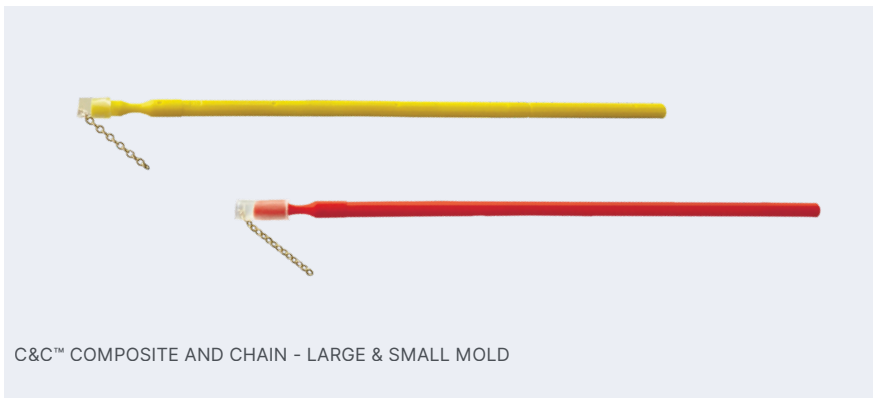


FLUORESCES UNDER BLACK LIGHT



ONE PIECE REMOVAL

## C&C™ COMPOSITE AND CHAIN SYSTEM MOLDED BASE AND CHAIN EXTRUSION SYSTEM



C&C™ COMPOSITE AND CHAIN - LARGE & SMALL MOLD

### REVOLUTIONIZES IMPACTED EXTRUSION PROTOCOLS

- Unparalleled strength
  - The C&C™ System does not use protruding metal attachments. Our patent pending design molds a base with composite – adapting flush to any palatal or buccal exposure.
- Painless removal
  - Instead of painfully breaking a bracket off a mobile tooth – the C&C™ is ground down with a bur – resulting in less patient discomfort.

### C&C™

1 Disposable Large Attachment Mold with Chain

#DCCP

55€

1 Disposable Small Attachment Mold with Chain

#DCCO

55€

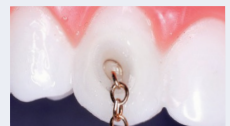
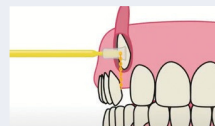
1.5 g FlowTain™ Flowable Composite w/ 10 tips

#FT

45€



FILL MOLD WITH FLOWABLE COMPOSITE



DELIVER C&C™ MOLD TO ENAMEL AND CURE



INSTRUCTIONAL VIDEO

Utilizing Chain & Composite System Available at RelianceU.tech

# Clear Aligner Support

## BOND ALIGNER® LIGHT CURE ALIGNER ADHESIVE

80€



BOND ALIGNER®

### BONDS HOOKS AND BUTTONS TO CLEAR ALIGNERS

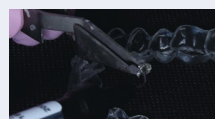
- No surface conditioning required
- Will bond any button or hook to all clear aligner materials
- Bonds without plastic preparation, primers, or conditioners
- A clear, light-cure paste for excellent aesthetics
- Low modulus of elasticity
  - Flexes with trays

### BOND ALIGNER®

1.4 g Bond Aligner®  
Syringe With 5 Tips

#BA

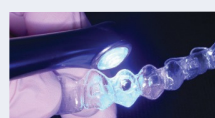
80€



1. APPLY TO BONDING BASE



2. DELIVER AND POSITION



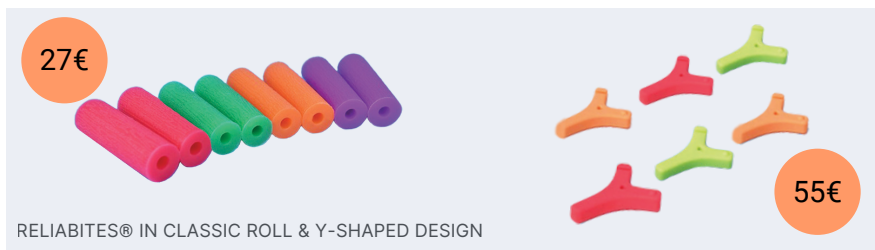
3. LIGHT CURE



BONDED ALIGNER

## RELIABITES® ALIGNER CHEWIES

27€



RELIABITES® IN CLASSIC ROLL & Y-SHAPED DESIGN

55€

### FULLY SEATS ALIGNERS FOR IMPROVED TREATMENT

- Applies uniform force to properly seat aligners
- Classic cylindrical rolls or versatile Y-shaped designs
- Food grade elastomer material
- Ensures a snug fit and complete engagement
- Various colors and flavors

### RELIABITES®

Flavor	Rolls	Y-shaped	Firmness
Apple	-	#RBYSA	Soft
Grape	#RBG	#RBYFG	Firm
Mint	#RBM	#RBYFM	Firm
Orange	#RBOR	#RBYSOR	Soft
Peach	-	#RBYFP	Firm
Strawberry	#RBS	#RBYSS	Soft

\* Firmness is only applicable for Y-Shaped Reliabites



CLASSIC ROLL DESIGN



Y-SHAPED DESIGN

\* Rolls packaged in pairs and sold 10 to a pack; 20 rolls total

\* Y-shaped option sold 10 to a pack

## RELIAPRY® CLEAR ALIGNER REMOVER TOOL



RELIAPRY®

250€

### REMOVES ALIGNERS IN THE QUICKEST & EASIEST WAY POSSIBLE

- Protects soft tissue and gums with specially-designed hook
- Works with multiple aligner brands
- Non-slip ring handle is undulated to provide a perfect and easy grip
- Fits inside most aligner cases
- Tamper-free packaging
- BPA-Free & Phthalate-Free
- Dishwasher safe

### RELIAPRY®

ReliaPry®

#AR100

250€



HYGIENIC WAY OF REMOVING ALIGNERS



KEEPS FINGERS OUTSIDE OF MOUTH

\* Each patient pack contains 1 ReliaPry tool. Contains 100 patient packs. One color only.

# Band/Appliance Cements



55€

PUSH SYRINGE



55€

LUER LOCK SYRINGE

## INDUSTRY LEADER IN BAND CEMENT

- Single paste system
- Light activated
- Resin base glass ionomer
  - High Fluoride release
- Natural or blue shade
- All purpose cement
  - Ultra Band-Lok® can also be used to bond large acrylic appliances and as an occlusal build-up material.
- Bonds to metal
  - Ultra Band-Lok® will bond chemically to stainless steel bands. Removal is all in one piece with cement in the appliance, making cleanup effortless.

## CLINICAL APPLICATIONS

- Band cementation
- Occlusal build ups
  - Occlusal buildup instructional video available at RelianceU.tech
- Acrylic appliances - Hyrax, MARA, RPE, etc.
  - Acrylic appliance instructional video available at RelianceU.tech
- Lab block out material

### ULTRA BAND-LOK®

5g Ultra Band-Lok® Syringe 5g	#UBLPP	55€
Ultra Band-Lok® Syringe Blue Shade	#UBLBPP	55€
5g Ultra Band-Lok® Syringe w/ 5 Tips	#LLUBLP	55€
5g Ultra Band-Lok® Syringe Blue Shade w/ 5 Tips	#LLUBLBP	55€
(50) Luer Lock Dispensing Tips	#TIPS50	35€
(5) Luer Lock Dispensing Tips	#TIPS5	7€



BONDS TO METAL - REMOVES WITH THE APPLIANCE AT DEBAND



OCCLUSAL BUILDUP

**INSTRUCTIONAL VIDEO**

Bonding Posterior Occlusal Buildups Available at RelianceU.tech



# Revolutionary New Glass Ionomer Band Cement

- Adheres aggressively to metal - Secure band adhesion - Bonds in severely contaminated fields (saliva, blood, or water)
- High compressive & tensile strength
- Contains fluoride – protects enamel



135€



discontinued

ONLY FROM  **RELIANCE®**



- Adheres to metal during removal
- Reduces cleanup time
- Resists washout under band



- Powder/Liquid mix
- Dual cure – Chemical or light activated



- Smooth consistent mix
- Natural or blue shade

## GLASSLOK® STARTER KIT \*

- 15g Powder
- Spatulas
- Measuring Scoop
- 15cc Liquid
- Mixing Pads

## GLASSLOK® ECONOMY KIT \*

- 100g Powder
- Spatulas
- Measuring Scoop
- (3) 25g Liquid
- Mixing Pads

### GL ASSLOK®

ClassLok® Natural Shade Starter Kit*	#GLS	260€
ClassLok® Blue Shade Starter Kit*	#GLSB	260€
ClassLok® Natural Shade Economy Kit*	#GLE	discontinued
ClassLok® Blue Shade Economy Kit*	#GLEB	discontinued
ClassLok® Powder (15g)	#GLP15	135€
ClassLok® Powder - Economy Size (100g)	#GLP100	discontinued
ClassLok® Liquid Natural Shade (15g)	#GLL15	145€
ClassLok® Liquid Natural Shade Economy Size (25g)	#GLL25	discontinued
ClassLok® Liquid Blue Shade (15g)	#GLL15B	145€
ClassLok® Liquid Blue Shade Economy Size (15g)	#GLL25B	discontinued

# Band/Appliance Cements



**RECOMMENDED CEMENT FOR PRINTED METAL APPLIANCES**



SELF MIX DUAL SYRINGE & SELF MIX CANULA TIPS

90€



SCREW SYRINGES

"A" PASTE

"B" PASTE

45€

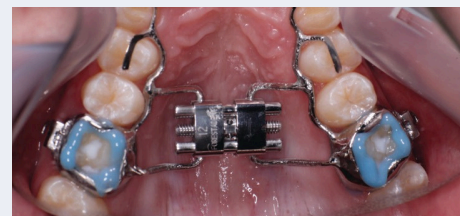
## THE ORIGINAL, TIME-TESTED COMPOMER BAND CEMENT

- Bonds chemically to metal
- Secure band cementation
- Easy, clean removal - Self mix dual syringes
  - Tips mix and dispense paste
  - Proportional paste mix
  - Eliminates spatulating
- Dual cure - light and/or chemical
  - Initial tack cure, yet full polymerization is always achieved
  - Four minute working time
- Natural or blue shade

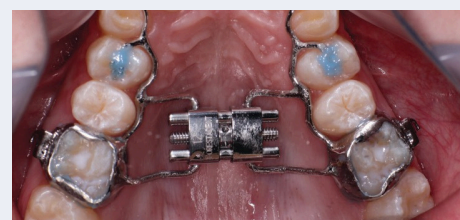
BAND-LOK®		
5gm Paste A / 5gm Paste B (Includes 15 Self Mix Tips) Natural Shade	#SMBL	90€
5gm Paste A / 5gm Paste B (Includes 15 Self Mix Tips) Blue Shade	#SMBLB	90€
Self Mix Tips (15)	#SMT	25€
SCREW SYRINGES 6g PASTE		
Paste A Syringe Natural Shade	#BLSA	45€
Paste A Syringe Blue Shade	#BLSAB	45€
Paste B Syringe	#BLSB	45€



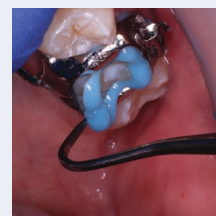
SELF MIX SYRINGE ELIMINATES SPATULATION



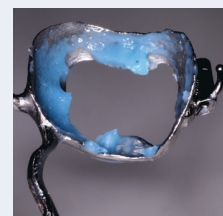
PERFECT VISCOSITY FOR PRECISE APPLICATION



ALWAYS ACHIEVES FULL POLYMERIZATION



TACK CURED FLASH REMOVED IN ONE PIECE



METAL BONDING REDUCES CLEAN UP AT DE-BAND



# CROWN-LOK™

METAL CROWN LUTING CEMENT



90€

SELF MIX DUAL SYRINGE (BLUE SHADE ONLY) & SELF MIX CANULA TIPS



45€

SCREW SYRINGES

"A" PASTE

"B" PASTE

## CROWN-LOK®

5gm Paste A / 5gm Paste B (Includes 15 Self Mix Tips) Blue Shade	#SMCLB	90€
--	--------	-----

Self Mix Tips (15)	#SMT	25€
--------------------	------	-----

## SCREW SYRINGES 5g PASTE

Paste A Syringe Natural	#CLSA	45€
-------------------------	-------	-----

Shade Paste A Syringe Blue	#CLSAB	45€
----------------------------	--------	-----

Shade Paste B Syringe	#CLSB	45€
-----------------------	-------	-----

### SECURE METAL CROWN AND BAND CEMENTATION

- Bonds chemically to stainless steel
- Simplified removal and cleanup
- Two minute working time
- Five minute set time
- Natural or blue shade
- Contains Fluoride
- Syringe choices
  - Screw syringe
  - Dual syringe - self mix
    - Tips mix and dispense paste
    - Proportional paste mix
    - Eliminates spatulating

# Tooth Preparation



## REGULAR TIPS



SMALL



LARGE

## LINGUAL TIPS



SMALL



LARGE

## MICROETCHING MADE CLEAN AND EFFICIENT

- Precise surface microetching
  - Increases surface retention
  - Insures properly prepped surface
  - Maximizes bond strength on all surfaces
- 4 hole handpiece
  - Standard airline attachment
  - Easy chairside engagement
  - Stainless steel construction
- Pre-loaded cartridge tips
  - Disposable, no-mess application
  - No aluminum oxide management
  - 50 micron aluminum oxide
  - 2 tip sizes
    - Small (6 teeth)
    - Large (18 teeth)

## CLINICAL APPLICATIONS

- Lingual bonding
- Artificial substrate bonding
- Molar prep for bonds or bands

## ETCHMASTER®

### STARTER KIT

Etchmaster Starter Kit	#EMHA	650€
------------------------	-------	------

### SMALL TIPS

Regular Tips 25 Pk	#EMTRS	145€
--------------------	--------	------

Lingual Tips 25 Pk	#EMTLS	145€
--------------------	--------	------

Regular Tips 50 Pk	#EMTRS50	260€
--------------------	----------	------

Lingual Tips 50 Pk	#EMTLS50	260€
--------------------	----------	------

### LARGE TIPS

Regular Tips 25 Pk	#EMTRL	205€
--------------------	--------	------

Lingual Tips 25 Pk	#EMTLL	205€
--------------------	--------	------

*90 Micron 25 Pk	#EMTRL90	205€
------------------	----------	------

- \* Etchmaster Handpiece Starter kit includes
  - 4 Hole Handpiece Attachment
  - (5) Regular Small aluminum Oxide Tips
  - (5) Lingual Small aluminum Oxide Tips

\* Recommended for removing composite from bracket bases and microetching stainless steel appliances. Not recommended for use on enamel.



SURFACE MICROETCHING



## INSTRUCTIONAL VIDEO

Bonding to Various Artificial Substrates  
Available at RelianceU.tech

# Tooth Preparation



139€



USEP®

## ONE STEP ETCHANT AND PRIMER

- Combines preparatory etching and priming into one simple step
- Effective and efficient tooth prep
- Reduces chairtime
- Single liquid application – No mixing
  - Scrub onto enamel for 5 seconds
  - Air dry
  - Apply Assure Plus
  - Air dry
  - Deliver bracket and cure
- Effective for all enamel surfaces
  - Bracket and Tube bonding
  - Buildups
  - Increasing band cement retention
  - Reliamold delivery
- Product must be refrigerated nightly

INCREASE ANY S.E.P. STRENGTH WITH ASSURE PLUS

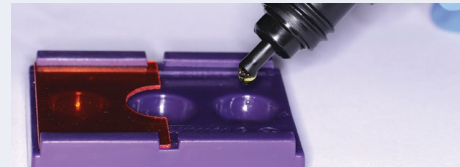
Assure® Plus (Page 3)



139€

USEP®

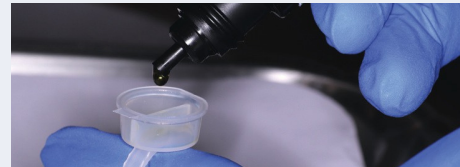
6ml Bottle	#USEP	139€
2ml Bottle	#USEP2ML	50€



DISPENSE ULTRA S.E.P. INTO CHAIRSIDE WELL, NO MIXING REQUIRED

\* Chairside wells appear on page 36

or



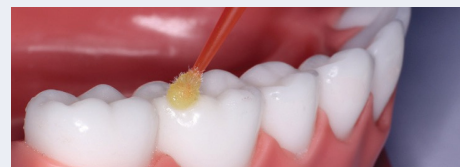
DISPENSE ULTRA S.E.P. INTO RELIANCE DUAL RING WELLS. NO MIXING REQUIRED

\* Mixing wells appear on page 36

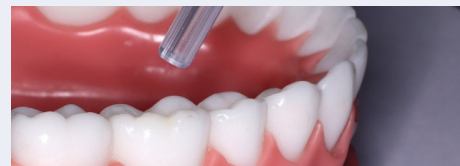
or



DRASTICALLY REDUCE MATERIAL COST ON REBONDS BY SATURATING A MICROBRUSH WITH A SINGLE-TOOTH VERTICAL DISPENSE



WITH A MICRO-BRUSH, AGGRESSIVELY SCRUB ULTRA S.E.P. ONTO TOOTH FOR 5 SECONDS



AIR DRY FOR 2-3 SECONDS BEFORE PLACING ATTACHMENT/APPLIANCE



# RELIANCE S.E.P.™

SELF ETCHING PRIMER



RELIANCE S.E.P.™

## RELIANCE S.E.P.™

S.E.P.™ Kit (Contains all components)	#SEPPRO	discontinued
Refill Cartridges (4ml)	#SEPR	115€
Click Syringe Dispenser	#SEPD	discontinued
Mixing Well w/ Light Impervious Shield	#1SEPW	15€

substitution to discontinued products : USEP

- Etchant and bonding primer
- One step application
- Click-syringe dispenses pre-measured amounts
- Each dispensing click conditions 12-14 teeth
- No need to etch before applying S.E.P.



# ASK®

ALL SURFACE BOND ENHANCEMENT KIT



800€

ASSURE® PLUS, PORCELAIN CONDITIONER, ETCHMASTER® HANDPIECE

## ASK®

ASK® Kit	#ASK	800€
----------	------	------

\* ASK® Kit includes

- (1) Etchmaster intra-oral sandblaster
- (5) Labial pre-loaded 50 micron aluminum oxide tips
- (5) Lingual pre-loaded 50 micron aluminum oxide tips
- (1) 6 ml Assure Plus
- (1) 8cc Porcelain Conditioner

### PREPS ANY ARTIFICIAL SUBSTRATE

- Everything needed for bonding any artificial substrate
  - Wet or dry, normal or atypical enamel, composite, metal, porcelain, acrylic and zirconia
- Maximum bond strength with no additional primers

# Tooth Preparation

## BLUE GEL ETCHANT



BLUE GEL ETCHANT

25€

- Controlled and even application
- Excellent for lingual retention (page 25) or large acrylic appliances (page 28)
- 35% phosphoric acid
- Contains antimicrobial B.A.C.

### BLUE GEL ETCHANT

Contains 5g syringe Gel Etchant #BEGS **25€**  
with 10 tips



BLUE SHADE ENSURES UNIFORM COVERAGE

## GEL ETCHANT



SYRINGE W/ TIPS 9g BOTTLE 18g JAR

- 37% phosphoric acid
- Controlled application

## LIQUID ETCHANT



9g BOTTLE 23g BOTTLE 23g CHERRY FLAVOR

- 37% phosphoric acid
- Green disclosing tint
- Regular or cherry flavor

### GEL ETCHANT

6.5g Syringe w/ 20 Tips 9g #EGSS **25€**

Bottle #EG9 **25€**

18g Jar #EG18 **40€**

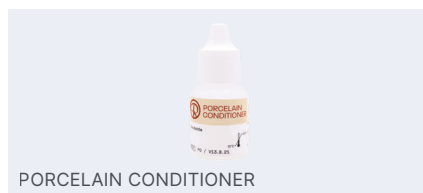
### LIQUID ETCHANT

9g Bottle 23g #EL9 **25€**

Bottle 23g Cherry #EL24 **45€**

Flavor #EL24C **45€**

## PORCELAIN CONDITIONER FOR BONDING TO CERAMIC CROWNS



PORCELAIN CONDITIONER

- Effective with porcelain, zirconia and lithium disilicate
- Product must be refrigerated nightly

## PORC ETCH™ PORCELAIN ETCHING AGENT WITH BARRIER GEL



PORC ETCH™

- Preps porcelain crowns for bonding

### PORCELAIN CONDITIONER®

8cc Porcelain Conditioner #PO **45€**

### PORC ETCH™

7g Porc Etch™ w/ Barrier Gel #POE **45€**



INSTRUCTIONAL VIDEO

Ceramic bonding instructional video  
Available at RelianceU.tech



# ASSURE®

THE ORIGINAL UNIVERSAL BONDING RESIN

ASSURE®

6ml Assure® Universal Bonding Resin

#AS

139€



139€

ASSURE®

- Bonding primer and enhancer
- Typical or atypical enamel
- Metal and composite restorations



# LIGHT BOND™ SEALANT

LIGHT CURE RESIN

LIGHT BOND™ SEALANT

	REGULAR	FILLED	
3g	#LBS3F	#LBFSF	40€
3g (No Fluoride)	#LBS3		40€
7g	#LBS7F	#LBFS7F	55€



55€

40€

LIGHT BOND™ SEALANT

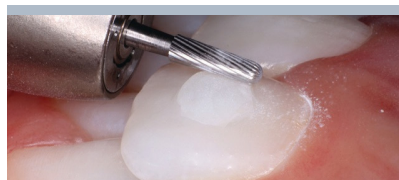
- Bonding primer and sealant
- Available with or without quartz filler

# Clean Up & Polishing



## STEP 1 – BULK COMPOSITE REDUCTION

20€



- 18 fluted carbide
- Quick removal of bulk composite
- Gentle on enamel
- Use with or without H2O

### SOLD INDIVIDUALLY

Carbide Bur 118S	#RSB
	
Carbide Bur 118L	#RSBL
	
Carbide Bur 218	#RSB2
	
Carbide Lingual Bur 815	#RSB815
	

## STEP 2 – RESIDUAL COMPOSITE REMOVAL

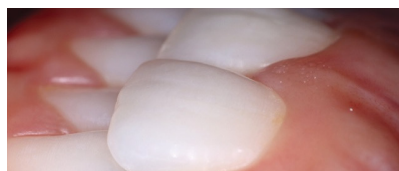
55€



- Polishes tooth surface
- Black point discloses when composite is fully removed
- Removes residual composite
- Does not create heat

Straight Hand Piece (Pack of 12)	#RSPHP
	
Latch (Pack of 12)	#RSPL
	
Friction Grip (Pack of 12)	#RSPFG
	

## STEP 3 – FINISHING & POLISHING



- Pre-packaged—sterile cups for individual patient use. Pre-mixed—just open and apply with prophy cup.
- No added chemicals, flavoring, fluoride or oils.
- Enamel polisher—1st & Final® can be used as final polishing step with the Reliance Renew™ Finishing System.
- Restore™ Diamond Polishing Paste for restoration of glaze on artificial surfaces.

1st & Final® (200 sterile cups) #FF



45€

2g Syringe Restore™ #RESPP2



70€

# Lingual Retention

## L.C.R.™ LIGHT CURE RETAINER ADHESIVE



55€

- Micro+ nano fill for flowable consistency with durability of highly filled composite
- Effortlessly slumps over wire

- Fluoresces w/blacklight
- Cures to a glassy finish
- Patient comfort - reduced wear
- Developed for BLR applications

### L.C.R.™

5g L.C.R.™ Paste in Push Syringe	#LCR	55€
1.5g L.C.R.™ Paste in Push Syringe w/ Tips	#LCR15	55€
5g L.C.R.™ Paste in Tips (11)	#LCRT5	65€
5 - 15 gauge disposable contra-angle tips	#TIPS5	7€
50 - 15 gauge disposable contra-angle tips	#TIPS50	35€
Luer Lok Syringe Wing	#FTWING	5€

\* LCR syringe pictured with optional "wing" to allow for more comfortable and ergonomic dispensing

## GO TO® LIGHT CURE BRACKET ADHESIVE



60€

\* Full description on page 5

## FLOWTAIN™ LIGHT CURE FLOWABLE COMPOSITE



45€

### BLR APPLICATION

- Thixotropic viscosity
- Cures glassy smooth
- Slumps over wire
- Fluoresces w/ blacklight

\* Full description on page 33

### GO TO®

4g Paste In Tips	#GTT	60€
FLOWTAIN™		
1.5 g Flowtain™ With Tips (10)	#FT	45€
10 - 19 gauge disposable contra-angle tips	#19TIPS10	10€
50 - 19 gauge disposable contra-angle tips	#19TIPS50	35€

## ASSURE® PLUS ALL SURFACE BONDING RESIN



139€

### BLR APPLICATION

- Enhances bond strength
- Overcomes mild contamination

\* Full description on page 3

## ETCHMASTER® HANDPIECE BONDING PRIMER AND ENHANCER



650€

### BLR APPLICATION

- Mechanically prepares tooth surface

\* Full description on page 17

### ASSURE® PLUS

6 ml Assure® Plus All Surface Bonding Resin	#PLUS	139€
2 ml Assure® Plus All Surface Bonding Resin	#PLUS2ML	95€
50 Pack Assure® Plus 0.20 ml Unidose (10 ml)	#UAP50	215€

### ETCHMASTER® HANDPIECE

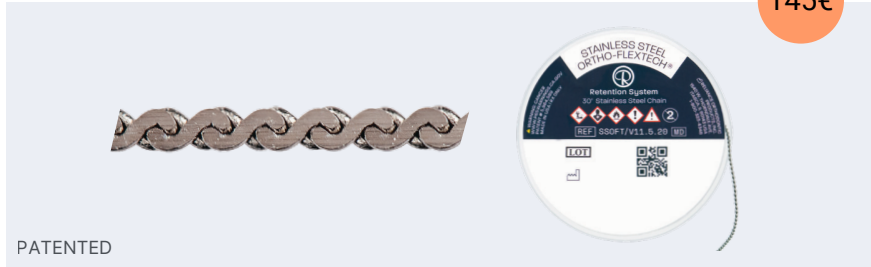
Etchmaster Starter Kit	#EMHA	650€
------------------------	-------	------

# Lingual Retention



## ORTHO FLEXTECH® FLEXIBLE LINGUAL RETAINER STAINLESS STEEL OR WHITE GOLD

145€



PATENTED

### A NEW GENERATION IN FIXED RETENTION

- Secure and stable long term passive retention
- Patented interlocking chain design
- Adapts to lingual anatomy
  - No bending or burnishing
- No models or impressions
- Flexes interproximally
  - Resists breakage and bond failures
- No reciprocal forces – allows for minor biological movement – will not take an active bend
- Stainless steel offers increased tensile and torsional strength
- Different material choices
- Low profile – patient comfort

### CLINICAL APPLICATIONS

- 3 to 3 retention
- Periodontal splinting

#### ORTHO FLEXTECH®

30" SS Spool	#SSOFT	145€
30" SS Spool Etched	#SSOFTE	155€
30" Gold Spool (white gold)	#OFT2	350€
30" Nickel-Free Gold	#NFOFT2	375€
30" Gold Spool - Etched	#OFT	350€



PATENTED



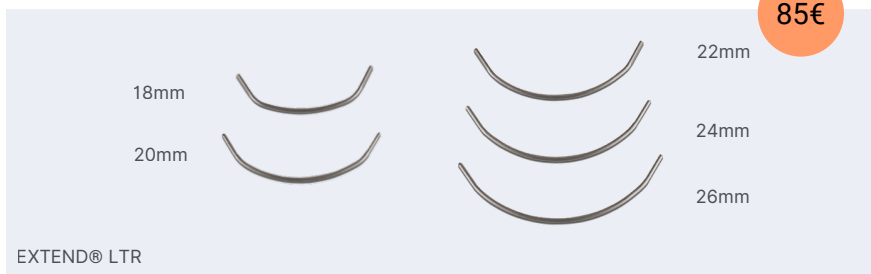
INSTRUCTIONAL VIDEO

Ortho Flex Tech Available at RelianceU.tech



## EXTEND® LTR RETENTION WITH TWO BOND POINTS

85€



EXTEND® LTR

### 3 TO 3 LINGUAL RETENTION

- Titanium molybdenum wire
- Low profile .027 TMA wire
- Can be bonded to all 6 anteriors or to cuspids only
- Flattened and serrated cuspid pads
- Preformed with cuspid offsets
- Hygiene friendly
- Nickel free

#### EXTEND® LTR

##### INDIVIDUAL SIZES - 5 PER PACKAGE

LTR 18mm	#EX18	85€
LTR 20mm	#EX20	85€
LTR 22mm	#EX22	85€
LTR 24mm	#EX24	85€
LTR 26mm	#EX26	85€
Measure Device (1)	#EXMD	10€
Extend® LTR Starter Kit	#EXK	350€

\* Extend LTR kit includes

- (5) 18mm wire
- (5) 20mm wire
- (5) 22mm wire
- (5) 24mm wire
- (5) 26mm wire
- (25) Arch Measuring Devices



# RETAINIUM® XL

OPTIMUM STRENGTH BETA TITANIUM RETAINER WIRE

RETAINIUM® XL

Retainium® XL – (10) 6" Wires #XLRET **75€**

75€



RETAINIUM® XL

## FIXED RETENTION WITH TITANIUM MOLYBDENUM

- Flat .027" x .016" ribbon arch
- Low profile – comfortable and functional
- Increased strength
- MRI compatible
- Easy adaptation
- Nickel free titanium construction

## CLINICAL APPLICATIONS

- Fixed lingual retention
- Diastema maintenance
- Space maintenance
- Splinting



# RETAINIUM®

ORIGINAL TM ALLOY RETAINER WIRE

75€



RETAINIUM®

## LINGUAL TITANIUM MOLYBDENUM RETENTION

- Low profile
- .027" x .011" ribbon arch
- Adaptable
- Flexes Interproximally
- Nickel free
- MRI compatible

## CLINICAL APPLICATIONS

- Fixed lingual retention



# BOND-A-BRAID®

LINGUAL RETAINER WIRE

75€



BOND-A-BRAID®

## CLOSE AND ACCURATE ANATOMICAL ADAPTATION

- The dead soft wire easily adapts and is excellent for semi-permanent orthodontic splinting of the upper and lower incisors, diastema maintenance and other tooth splinting
- Lingual retainer
- .027" x .011" ribbon arch wire
- 8-strand braided wire
- Dead soft – adapts easily

RETAINIUM®

Retainium – (10) 6" Wires #RET **75€**

BOND-A-BRAID®

Bond-a-Braid® 10 (6") Wires #BAB2 **75€**



**INSTRUCTIONAL VIDEO**

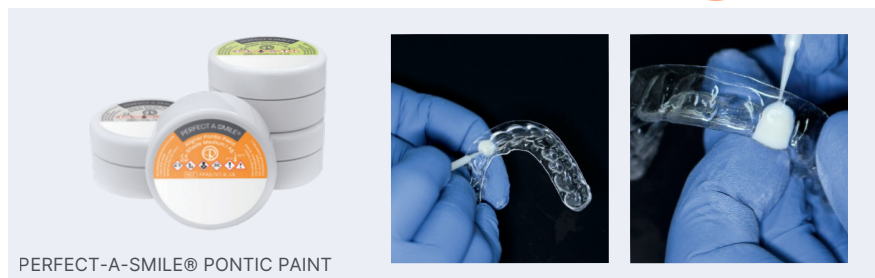
Maxillary Retention Using Retainium  
Available at RelianceU.tech

# Restorative Solutions

## PERFECT-A-SMILE® PONTIC PAINT

IMMEDIATE RESTORATIONS AND SPACE MAINTENANCE

69€



### QUICK AND ECONOMICAL AESTHETIC SOLUTION

- Light cure paste in 10 shades
- Applies smoothly to clear aligner sockets
- Translucent to match enamel
- High elasticity modulus
- Will not crack or splinter
- Bonds to any clear aligner
- Quick and economical
- Same day fix
- No doctor chairtime
- No lab fees or delays
- Complete in-office system
- Easy temporary bridge
- Approximately 100 complete pontics per jar

### CLINICAL APPLICATIONS

- Eliminates flippers
- Temporary restorations
  - Congenital, trauma
  - Pre-pontic, peg laterals
  - Grafting, implants
- Space maintenance
- Aesthetic restorations
  - Single tooth
  - Partial arch

### PERFECT-A-SMILE® PONTIC PAINT

Most Popular Shades A2, B1, D3 and C4

4g Jar PP/Bleach	#PPBL
4g Jar PP/A1 Shade	#PPA1
4g Jar PP/A2 Shade	#PPA2
4g Jar PP/A3.5 Shade	#PPA35
4g Jar PP/B1 Shade	#PPB1
4g Jar PP/C1 Shade	#PPC1
4g Jar PP/C4 Shade	#PPC4
4g Jar PP/D3 Shade	#PPD3
4g Jar PP/Light Shade	#PASL
4g Jar PP/Medium Shade Super	#PASM
Fine Micro Brushes (100)	#MBSF

45€



## PERFECT-A-SMILE® PONTIC PUTTY

LIGHT CURE FORMABLE PASTE

50€



### FINGERTIP PONTIC FABRICATION

- Light cure composite paste
- Putty-like consistency
- Facilitates tooth shape formation
- Eliminates pontics, wax & PVS
- Bonds tenaciously to stone/resin models
- Provides proper clear aligner anatomy

### CLINICAL APPLICATIONS

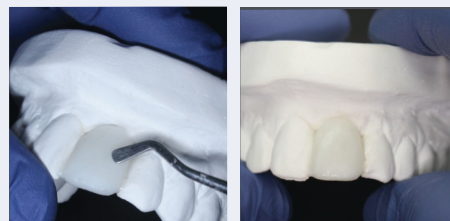
- Pontic formation by hand
- Bridges/fills gaps in model
- Facilitates proper aligner formation

### PERFECT-A-SMILE® PONTIC PUTTY

5g Paste In Syringe

#LBOPS

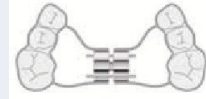
50€



Creating Pontic Teeth with Perfect A Smile Available at RelianceU.tech

# Acrylic Appliance Bonding

## ACRYLIC APPLIANCE PRE-DELIVERY PREP



 **BLUE GEL ETCH**  
SYRINGE APPLICATOR WITH TIPS

 **ASSURE® PLUS**  
BONDING PRIMER AND ENHANCER

 **PLASTIC CONDITIONER**  
ACRYLIC PREP



25€

BLUE GEL ETCH



139€

ASSURE® PLUS



45€

PLASTIC CONDITIONER

- Controlled application around buccolingual circumference
- Order #BEGS
- \* Full description on page 18

- The only primer that bonds to deciduous enamel

- Initiates bond between appliance and adhesive
- 10g bottle
- Order #PL

## ACRYLIC APPLIANCE CEMENTS

 **BAND-LOK® DUAL CURE**  
SELF MIX SYRINGE

 **EXCEL®**  
CHEMICAL CURE



90€

BAND-LOK® DUAL CURE



35€

EXCEL®

- Order #SMBL - Natural
- Order #SMBLB - Blue

\* Full description on page 15

- Order #1ERSAF & 1ERSB

\* Full description on page 8

# Reliamold

MOLDS MAY BE DELIVERED WITH BONDER HANDLE (#BHA) OR ANY HEMOSTAT.



## Mold Composite Auxiliaries Directly on Teeth 125€

### EASY, EFFECTIVE & ECONOMICAL

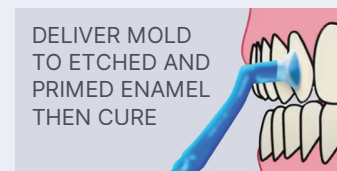
- Molds are translucent and flexible to facilitate composite loading, curing, and disengagement.
- A mold is filled with a light cure composite (Go To®, T.K.O.®, or Flowtain™ recommended) then delivered to the tooth and cured.
- The desired auxiliary is delivered, formed, and functional immediately.
- Value priced to be single-use disposable.



EASY-TO-USE  
PRECISION MOLDS



FILL MOLD  
WITH COMPOSITE



DELIVER MOLD  
TO ETCHED AND  
PRIMED ENAMEL  
THEN CURE

### DIFFERENT MOLDS FOR DIFFERENT APPLICATIONS

ONLY FROM **RELIANCE®**



#### HABIT CONTROL

Inhibits thumbsucking and tongue thrust tendencies.

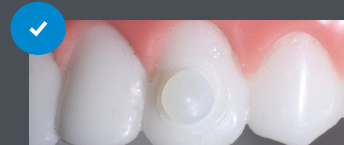
Habit control #RMH



#### CUSPID RAMP

Bite opening ramp applied to the cuspid—5.0 mm.

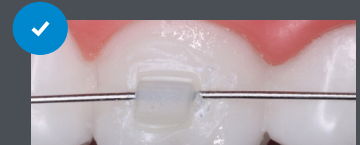
Cuspid ramp #RMC



#### BUTTON

Low profile and smooth. Facilitates elastomeric or ligature engagement.

Button #RMBU



#### MOLAR TUBE

Molds a temporary tube. Accepts wire up to 020.

Molar Tube #RMT



#### MOLAR PAD

Open the bite with posterior occlusal buildups. T.K.O.® or Ultra Band-Lok® recommended.

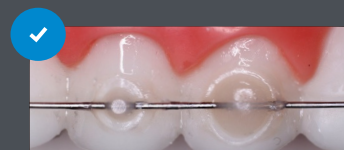
Molar Pad #RMMP



#### BITE RAMP

Bite opening turbo formed on the lingual of upper incisors. 2 sizes— 3.0 mm or 5.0 mm.

Bite ramp 3mm #RMBR3  
Bite ramp 5mm #RMBR5



#### WIRE HOLDER

Bonds lingual retainers or other wires consistently with a smooth and low profile finish. 2 sizes— 3.0 mm or 4.5 mm.

Wire bonder large #RMWBL  
Wire bonder small #RMWBS

#### MOLD KIT

(2) Bonder Handles (108) Molds; 12 Per Type

Mold Kit #RMK 275€

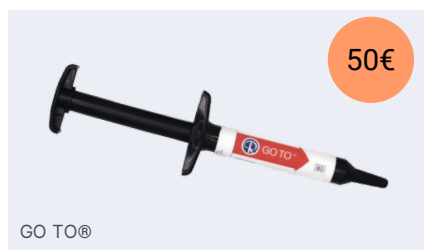
#### INDIVIDUAL MOLDS

(25) Molds Per Package

Bonder Handle Sold Separately #BHA 5€

# Custom Base Indirect Bonding

## MODEL ADHESIVES



- Tacky paste viscosity
- Unlimited working time
- Heat curable
- Highly filled composite

- Viscous to resist drift on resin and stone models
- Extended working time to allow bracket manipulation
- Single-piece flash clean-up

### THERMA-CURE™

5g Therma-Cure™ Syringe	#TC	50€
-------------------------	-----	-----

### GO TO®

4g Paste Syringe 4g	#GTP	50€
---------------------	------	-----

Paste In Tips (10 Tips)	#GTT	60€
-------------------------	------	-----

## TRANSFER ADHESIVES



- Needle tip dispenser
  - Using the tips provided, these materials are easily injected onto custom pads
- Low modulus of elasticity to resist breakage
- Highly filled to bridge gaps between custom pads and tooth surface

- 90-Second working time
- Excellent molecular conversion rate
- Self-curing
- Product must be refrigerated nightly

### FLOWTAIN™

1.5g Flowtain™ with Tips	#FT	45€
--------------------------	-----	-----

19 gauge Tips (10)	#19TIPS10	10€
--------------------	-----------	-----

### MAXIMUM CURE® SEALANT

7g Maximum Cure® Sealant A with Fluoride	#MC7AF	50€
--	--------	-----

7g Maximum Cure® Sealant B	#MC7B	50€
----------------------------	-------	-----

20g Maximum Cure® Sealant A with Fluoride	#MC20AF	80€
---	---------	-----

20g Maximum Cure® Sealant B	#MC20B	80€
-----------------------------	--------	-----

# Clean Base IDB Adhesives



option For diGitAlly Guided process

## L.C.R.™ HYBRID FLOWABLE IDB ADHESIVE



55€

- Hybrid flowable consistency allows for instant bracket mesh penetration
- Resin matrix holding capacity allows for pre-loading up to 7 days in advance
- Micro+ nano fill for flowable consistency with durability of highly filled composite
- Fluoresces for easy removal

L.C.R.™

5g L.C.R.™ Paste in Push Syringe #LCR 55€

1.5g L.C.R.™ Paste in Push Syringe w/ Tips #LCR15 55€

5g L.C.R.™ Paste in Tips (11) #LCRT5 65€

## GO TO® LIGHT CURE BRACKET ADHESIVE



50€

- Perfect viscosity to allow bracket mesh penetration in jigs
- Highly filled to provide ultimate strength
- Pre-loadable – allowing even shorter chair time prep
- Fluoresces for easy removal

GO TO®

4g Paste Syringe 4g #GTP 50€

Paste In Tips (10 Tips) #GTT 60€

- GoTo® CC / #GTPCC 50€

## EXCEL® CHEMICAL CURE SPECIALTY ADHESIVE



35€

- Unsurpassed bond strength
- Thin, creamy consistency
- Facilitates clean base penetration
- Three minute working time
- Contains Fluoride

EXCEL®

Excel® Regular Paste A in 6g Screw Syringe with Fluoride #1ERSAF 35€

Excel® Regular Paste B in 6g Screw Syringe #1ERSB 35€

Excel® Regular Paste A in 12g Jarb with Fluoride #ERJAF 55€

Excel® Regular Paste B in 12g Jar with Fluoride #ERJB 55€

# Accessories

## DISPOSABLE BENDA BRUSHES

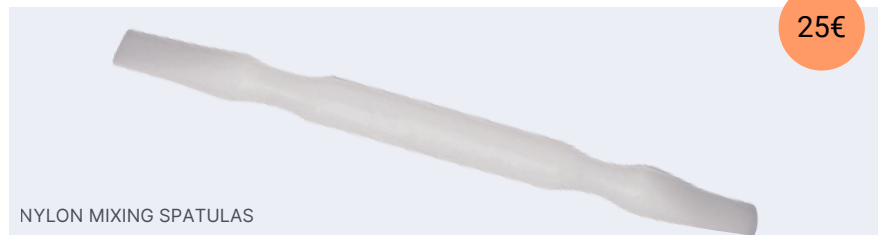


55€

DISPOSABLE BENDA BRUSHES	
4" Benda Brushes (250)	#4BB250 55€

- Sealant and enhancer applicators

## NYLON MIXING SPATULAS



25€

NYLON MIXING SPATULAS	
Spatulas (50)	#S 25€

## MICRO BRUSHES



45€

MICRO BRUSHES	
Micro Brushes (100)	#MB 45€
Super Fine Micro Brushes (100)	#MBSF 45€

## SPONGE PELLETS



30€

## BRUSH HANDLE AND TIPS



SPONGE PELLETS	
Sponge Pellets (500)	#SP 30€
BRUSH HANDLE AND TIPS	
Brush Handle	#BHA 5€
Brush Tips (250)	#BT250 30€

- Etchant applicators

## MIXING PADS

10€

MIXING PADS



## MIXING WELL

5€

MIXING WELL



### MIXING PADS

Disposable Mixing Pads (1) #1PADS 10€

### MIXING WELL

Mixing Well #1MXW 5€

## S.E.P MIXING WELL RING WELLS

15€

S.E.P. MIXING WELL



- Ambient light blocking

40€

RING WELLS



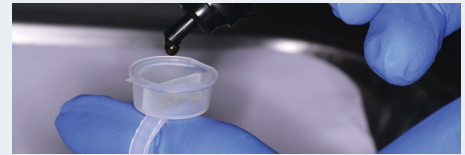
- Efficient finger mounted method to apply sealants and resins at chairside
- 2 separate reservoirs
- 100 rings per package

### S.E.P. MIXING WELL

S.E.P. Mixing Well with Light Impervious Shield #1SEPW 15€

### RING WELLS

Ring Wells #RW 40€



## UVEX EYEWEAR

UVEX ULTRA SPEC® 2000



### UVEX EYEWEAR

Uvex Ultra Spec® 2000 #SGU 45€

- Fits over prescription eyeglasses

## SKYPER® EYEWEAR

UVEX SKYPER®



### UVEX SKYPER®

UVEX Skyper® #SG 45€

- Low profile

# Accessories

## MARK II CR SYRINGE



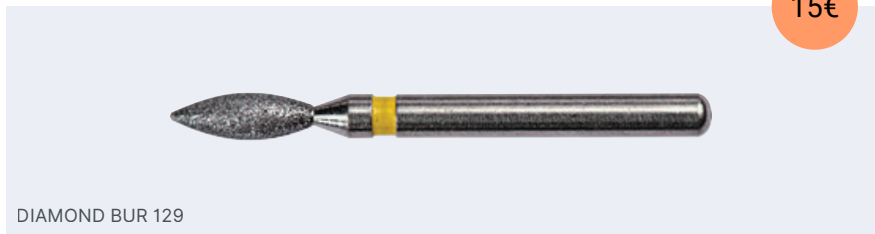
40€

MARK II CR SYRINGE

Mark II CR Syringe #CRII 40€

- Used with pre-loaded adhesive tips

## DIAMOND BUR 129



15€

DIAMOND BUR 129

Diamond Bur 129 #DB 15€

- Prep bur  
- Roughens surface  
\* Other burs appear on page 23

## ACCESS™ RETRACTOR



39€

- Sterilize with dry heat or autoclave

## TECHNIQUE CARDS



39€

- Chairside reference for all bonding scenarios  
- This item is non-returnable

ACCESS™ RETRACTOR

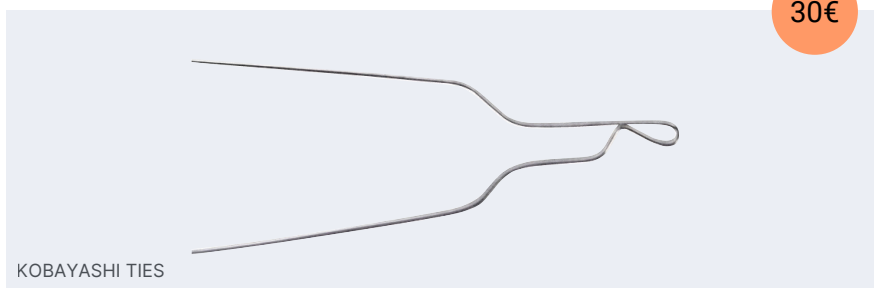
Access™ Adult Cheek Retractor #CH1 39€

Access™ Pado Cheek Retractor #CH2 39€

TECHNIQUE CARDS

Chairside Bonding Technique Cards #TECH 39€

## KOBAYASHI TIES



30€

KOBAYASHI TIES

Tie Hooks - .010 100/Pkg #K10 30€

Tie Hooks - .012 100/Pkg #K12 30€

Tie Hooks .014 100/Pkg #K14 30€

Pre-Twisted .010 100/Pkg #SK10 35€

Pre-Twisted - .012 100/Pkg #SK12 35€

Pre-Twisted - .014 100/Pkg #SK14 35€